

**THERESA  
MÖLLER**

**ART ROTTERDAM  
2024**

**GALERIE BACQUEVILLE**

32 Rue Thiers, 59800 Lille, France  
contact@galeriebacqueville.com  
+33 (0)6 95 98 19 88

# Theresa Möller

Born in 1988.

Lives and works in Germany and Canada.

She studied at Academy of Fine Arts Leipzig (Hochschule für Grafik und Buchkunst) and received her diploma in painting and fine arts graphics in 2018. Before, she studied illustration and painting at the HAW Hamburg.

Since then, she received several grants and had residencies at Künstlerhaus Eckernförde (Germany) and Fonderie Darling (Montréal, Canada). Theresa Möller has participated in many international exhibitions in Austria, Belgium, France, Germany, Luxembourg, Portugal, Switzerland, and the United States.

# Art Rotterdam 2024

Theresa Möller's landscapes are immobile journeys, towards an undetermined elsewhere, a fantasized nature. Her canvases appear saturated with plant motifs and colours, in a complex composition that combines flatness and depth at the same time.

This complexity is transposed by the overlapping and interlocking lines of force that make up the artist's visual signature. Seen from a distance, the forest forms an imposing block, but opens the field to aquatic or vaporous surfaces, that occupy the 'background' of the image.

You then have to get up close and discover the details of the painting: from the foreground to the background, you can make out the sharp strokes, brush-strokes, drips, gradations and flat tints that make Theresa Möller's painting so vibrant.

# Painting as a constant flux

“Möller begins her paintings by throwing acrylic paint on the canvas that is lying on the ground, often starting with one or two colours. After applying these accidental layers of paint to the canvas, she then moves the canvas with both hands allowing the paint to drip and roll, sliding across the flat surface. It is a way of pushing the paint to its limit, working with the force of gravity while creating a constant flux of material that gradually evolves across the canvas. There is no certainty in this approach, the form is never fixed and spreads out in different directions, like flowers that pop up when the rain has fallen and the sun has shone on them. After this process of movement and blossoming, Möller seeks for places on the canvas where something can still be revealed. She then begins to fill these “openings” by painting trees and leaves with oil paint, creating a new layer on the surface. The trees cross the canvas in all directions, but always in linear lines. The boundaries between the background and the foreground become clear and a dynamic movement emerges taking the viewer’s perception in many directions. The contrast created by this layering gives shape to new forms that are created by the blending and mapping of the two layers. Each line creates a new form, each form offers depth. Some of the layers she brushes away with sponges, so that a translucent layer emerges, leaving visible what has been painted underneath. These translucent layers add another layer of depth and spacious light to the painting, like a misty cloud that appears in the morning when the sun rises.

Whereas her earlier works focus more on the geometry and graphic forms found in mountains or urban landscapes, her more recent work (such as *Branches 2021*, *Grain 2021*, *Structure 2021* or *Nexus 2020*) bring together fragments. These fragments are of nature, she is blending them or erasing them, and then adding layers of quick brushstrokes or dots of colour that are playful, disruptive and ambivalent. The brushstrokes appear like imaginary leaves or insects flying over the surface, affected by the wind that carries them along. They are dancing on the canvas creating a flowing dreamlike image.”

- Excerpt from *A Wanderer In The Wilderness*, text by Sarie Nijboer (curator and author).

Theresa Möller

*Sequence*

2024

oil and acrylic on canvas

190 x 160 cm

9 500€



Theresa Möller

*Perspective II*

2024

oil and acrylic on canvas

160 x 190 cm

9 500€





Theresa Möller

*Dusk*

2024

oil and acrylic on canvas

71,1 x 55,9 cm

4 000€



Theresa Möller

*Opening VI*

2022

oil and acrylic on canvas

80 x 60 cm

4 200€





Theresa Möller

*Transition*

2020

oil and acrylic on canvas

110 × 90 cm

5 000€



Theresa Möller

*Intricacy*

2022

oil and acrylic on canvas

100 x 120 cm

6 000€



Theresa Möller

*Vista*

2024

oil and acrylic on canvas

120 x 100 cm

6 000€





Theresa Möller

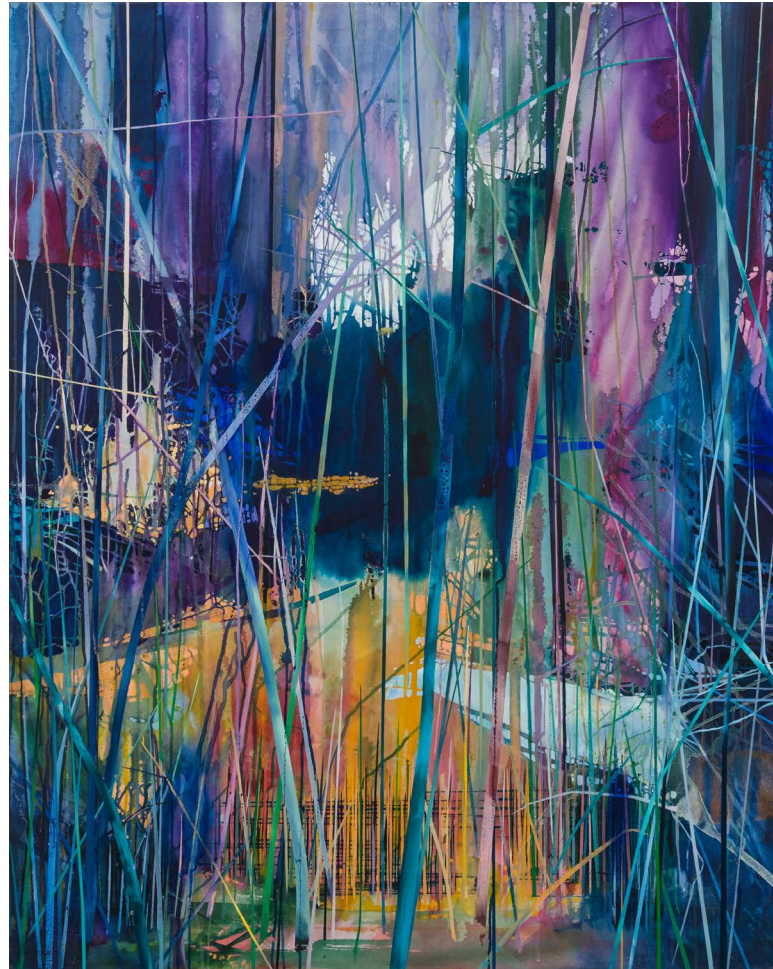
*Spinney*

2024

oil and acrylic on canvas

150 x 120 cm

7 500€



Theresa Möller

*Formation*

2024

oil and acrylic on canvas

120 x 150 cm

7 500€





Theresa Möller

*Mere*

2024

oil and acrylic on canvas

120 x 150 cm

7 500€





Theresa Möller

*Swamp*

2022

oil and acrylic on canvas

150 x 190 cm

9 000€



Theresa Möller

*Alteration II*

2022

oil and acrylic on canvas

160 x 190 cm

9 500€





Theresa Möller

*Arrangement*

2024

oil and acrylic on canvas

190 x 240 cm

12 500€





Theresa Möller

*Refuge II*

2022

oil and acrylic on canvas

190 x 240 cm

12 500€



# **GALERIE BACQUEVILLE**

32 Rue Thiers, 59800 Lille, France  
contact@galeriebacqueville.com  
+33 (0)6 95 98 19 88